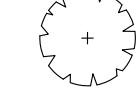



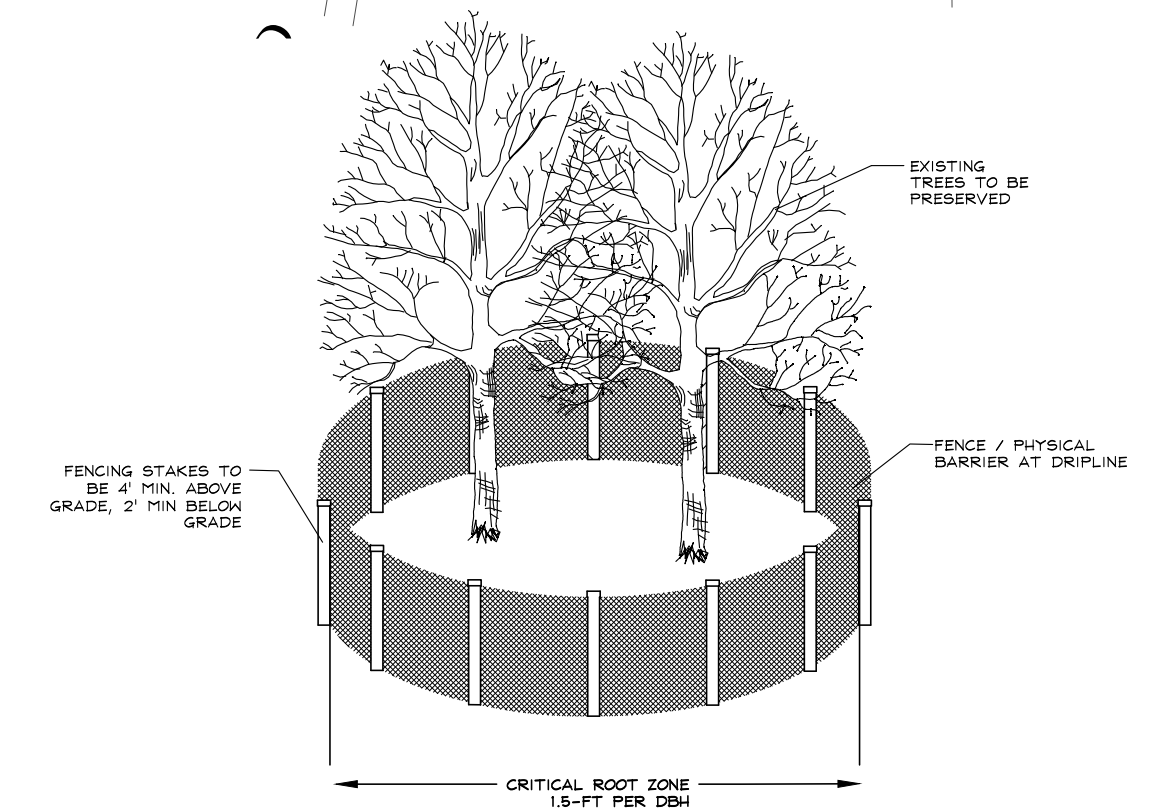


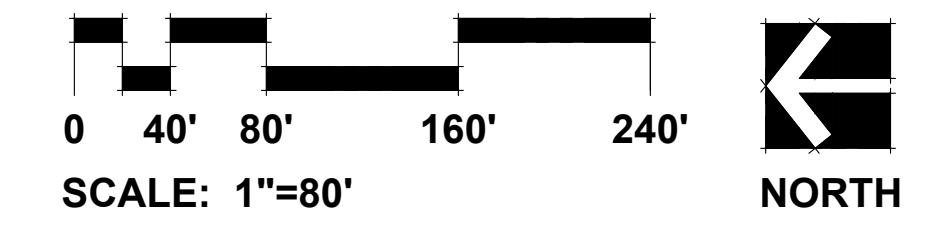
- LEGEND**
-  TREE TO BE PRESERVED
 -  TREE TO BE REMOVED
 -  RIPARIAN MAINTENANCE TREES
 -  TREE PROTECTION FENCE

TREE PRESERVATION NOTES

1. 48" high snow fence or wood barriers shall extend to the dripline of the tree or tree mass whenever possible, shall be installed before construction begins, and should not be removed until the completion of construction.
2. Activities within the tree protection area are not permitted, including staging of materials, parking, pedestrian access, etc.
3. All accidental damage to existing trees that are to be preserved shall be promptly treated as required in accordance with recognized horticultural practices and the instructions of the professional Arborist, Landscape Architect or Horticulturist.
4. Broken or badly bruised branches shall be removed with a clean cut, if recommended by the professional Arborist, Landscape Architect or Horticulturist.
5. Care shall be exercised by the contractors to protect all overhead limbs and branches from damage by contact with material, machinery or equipment and by damage from engine exhaust.
6. Contractors shall protect trees and vegetation against spills or discharge of fuels, lubricating oils, hydraulic fluids, anti-freeze and coolants, calcium chloride, lime and all other similar hydrocarbons, organic chemicals, and other materials which can be harmful.
7. When underground utilities are proposed within 5' of a preserved tree trunk, they must be augered if possible.



TREE PRESERVATION DETAIL
(NOT TO SCALE)
SEE NOTES



LOEBER FARM
SCHAUMBURG, ILLINOIS
TREE PRESERVATION PLAN

REV 2	5/09/2024
REV 1	1/25/2024
REVISIONS	

DATE	5.31.2023
PROJECT NO.	NC2116
DRAWN	OH
CHECKED	LRP
SHEET NO.	



TREE INVENTORY LIST

RATING AND SURVEY CRITERIA

- 1) Trees measured at 4.5 ft above the ground - DBH (diameter Breast Height)
- 2) All trees 12" DBH and above tagged. Dead trees were tagged for removal. Invasive shrubs were not tagged.
- 3) Health Rating:

Rating	Description	Criteria
1	Excellent	Less than 10% dead wood, typical growth for species, no observed defects
2	Good	Less than 20% dead wood, minor defects, sound structure, no decay
3	Fair	Less than 30% dead wood, minor crown die-back, minor trunk damage or cavities
4	Fair to Poor	Approximately 30-50% dead wood, lacking full crown, minor disease evidence, trunk damage
5	Poor	Over 50% dead wood, lacking full crown, disease or decay evident, structural damage/cavities
6	Dead	Less than 10% living wood, greater than 50% missing bark, adventitious growth only, decay

TAG NO.	SCIENTIFIC NAME	COMMON NAME	DBH (inches)	CONDITION	ACTION	STRUCTURE	HEALTH
1	<i>Juglans nigra</i>	Black Walnut	18	3 - Fair	Remove	Unbalanced	20% dead wood
2	<i>Juglans nigra</i>	Black Walnut	18	3 - Fair	Remove	U-shaped joint	Cavity
3	<i>Quercus alba</i>	White Oak	24	2 - Good	Preserve		
4	<i>Quercus alba</i>	White Oak	24	3 - Fair	Preserve	Unbalanced	
5	<i>Acer rubra</i>	Red Maple	15	2 - Good	Preserve		
6	<i>Quercus alba</i>	White Oak	30	2 - Good	Preserve		
7	<i>Quercus alba</i>	White Oak	24	2 - Good	Preserve		20% dead wood
8	<i>Quercus alba</i>	White Oak	30	2 - Good	Preserve	Trunk Scar	
9	<i>Quercus rubra</i>	Red Oak	15	2 - Good	Preserve		
10	<i>Tilia americana</i>	American Basswood	12	2 - Good	Preserve	Crown Lean	
11	<i>Ulmus americana</i>	American Elm	8	3 - Fair	Preserve	Crown Lean	Grown around fence
12	<i>Quercus rubra</i>	Red Oak	30	2 - Good	Preserve		
13	<i>Tilia americana</i>	American Basswood	22	3 - Fair	Preserve	Lean	
14	<i>Tilia americana</i>	American Basswood	12, 10, 8	3 - Fair	Preserve	Multi Leader, Lean	
15	<i>Quercus rubra</i>	Red Oak	12	2 - Good	Preserve	Crown Lean	Vines
16	<i>Tilia americana</i>	American Basswood	20, 14, 13	3 - Fair	Preserve	V-shaped joint, Lean	20% dead wood
17	<i>Quercus rubra</i>	Red Oak	16	2 - Good	Preserve	Unbalanced	
18	<i>Tilia americana</i>	American Basswood	12, 10, 10, 8	4 - Fair/Poor	Preserve	Unbalanced	
19	<i>Tilia americana</i>	American Basswood	20, 14, 12	3 - Fair	Preserve	V-shaped joint, Multi Leader, Lean	
1501	<i>Prunus serotina</i>	Black Cherry	7	3 - Fair	Preserve		30% dead wood
1502	<i>Prunus serotina</i>	Black Cherry	13	3 - Fair	Riparian Maintenance		30% dead wood
1503	<i>Quercus macrocarpa</i>	Bur Oak	6	2 - Good	Riparian Maintenance	Slight lean	
1504	<i>Juglans nigra</i>	Black Walnut	18	2 - Good	Remove	Unbalanced	
1505	<i>Tilia americana</i>	American Basswood	22, 16, 14	3 - Fair	Remove	Lean, Crown Lean	20% dead wood
1506	<i>Quercus rubra</i>	Red Oak	36	2 - Good	Remove		20% dead wood
1507	<i>Tilia americana</i>	American Basswood	15, 5	3 - Fair	Remove	Corrected lean	
1508	<i>Tilia americana</i>	American Basswood	23, 6	2 - Good	Remove	Prune 6" leader	
1509	<i>Quercus rubra</i>	Red Oak	32	2 - Good	Remove		20% dead wood, Cage around trunk
1510	<i>Quercus macrocarpa</i>	Bur Oak	33	5 - Poor	Remove		>50% dead wood, Dead Limbs, Dead Leader, Fungus, Cavity
1511	<i>Quercus rubra</i>	Red Oak	36	4 - Fair/Poor	Remove	Unbalanced	Dead Limbs, Cavity, Trunk Scar
1512	<i>Carya ovata</i>	Shagbark Hickory	6	2 - Good	Remove		
1513	<i>Quercus rubra</i>	Red Oak	26	2 - Good	Remove		20% dead wood, Healed trunk scar
1514	<i>Quercus rubra</i>	Red Oak	6	2 - Good	Remove	Corrected crown lean	
1515	<i>Ulmus americana</i>	American Elm	8	2 - Good	Remove	Unbalanced	
1516	<i>Quercus rubra</i>	Red Oak	36	2 - Good	Remove	Lean	20% dead wood
1517	<i>Quercus rubra</i>	Red Oak	19	2 - Good	Remove		
1518	<i>Quercus rubra</i>	Red Oak	14	2 - Good	Remove	Lean	
1519	<i>Quercus alba</i>	White Oak	44	2 - Good	Remove		20% dead wood, Cage around trunk
1520	<i>Quercus rubra</i>	Red Oak	10	2 - Good	Remove		
1521	<i>Catalpa speciosa</i>	Downy Hawthorn	7	3 - Fair	Remove	Lean	
1522	<i>Quercus rubra</i>	Red Oak	24	2 - Good	Remove		
1523	<i>Acer negundo</i>	Box Elder	14, 11	3 - Fair	Preserve	Double Leader, Lean	Dead ash stump next to it
1524	<i>Catalpa speciosa</i>	Catalpa	10	3 - Fair	Preserve	Lean over creek, Unbalanced	
1525	<i>Acer negundo</i>	Box Elder	7	2 - Good	Riparian Maintenance		20% dead wood
1526	<i>Acer negundo</i>	Box Elder	7	2 - Good	Riparian Maintenance		20% dead wood
1527	<i>Acer negundo</i>	Box Elder	7	3 - Fair	Riparian Maintenance		30% dead wood
1528	<i>Acer negundo</i>	Box Elder	9	3 - Fair	Riparian Maintenance	Slight lean	20% dead wood
1529	<i>Acer negundo</i>	Box Elder	7	3 - Fair	Riparian Maintenance	Lean	20% dead wood
1530	<i>Acer negundo</i>	Box Elder	10	3 - Fair	Riparian Maintenance	Lean, Crowded	20% dead wood, Vines
1531	<i>Tilia americana</i>	American Basswood	14, 11, 8, 6, 3	3 - Fair	Riparian Maintenance	Multi Leader, Crowded	20% dead wood
1532	<i>Tilia americana</i>	American Basswood	22	3 - Fair	Preserve	Lean, Unbalanced, Crowded	
1533	<i>Tilia americana</i>	American Basswood	20	2 - Good	Preserve	Slight lean at base	
1534	<i>Tilia americana</i>	American Basswood	16, 9	3 - Fair	Preserve	Double Leader, Lean, Unbalanced	
1535	<i>Tilia americana</i>	American Basswood	26	2 - Good	Preserve	Crown Lean	20% dead wood
1536	<i>Tilia americana</i>	American Basswood	30	3 - Fair	Preserve	Lean, Crown Lean	20% dead wood
1537	<i>Quercus macrocarpa</i>	Bur Oak	19	2 - Good	Preserve	Burbs at base	
1538	<i>Tilia americana</i>	American Basswood	20	2 - Good	Preserve	Unbalanced	
1539	<i>Quercus alba</i>	White Oak	20	2 - Good	Preserve		20% dead wood
1540	<i>Pinus strobus</i>	White Pine	13, 50	tal 2 - Good	Preserve		10% dead wood
1541	<i>Quercus alba</i>	White Oak	20	2 - Good	Preserve	Crown Lean	20% dead wood
1542	<i>Quercus alba</i>	White Oak	46	3 - Fair	Preserve	Fused Leaders, Unbalanced, Crown Lean	
1543	<i>Quercus alba</i>	White Oak	22	2 - Good	Preserve	Lean	
1544	<i>Quercus macrocarpa</i>	Bur Oak	24	3 - Fair	Preserve	U-shaped joint, Double Leader, Lean, Unbalanced	
1545	<i>Quercus alba</i>	White Oak	18	2 - Good	Preserve	Slight lean	
1546	<i>Quercus alba</i>	White Oak	25	2 - Good	Remove		20% dead wood
1547	<i>Quercus alba</i>	White Oak	20	3 - Fair	Remove	Crown Lean	20% dead wood
1548	<i>Quercus alba</i>	White Oak	25	2 - Good	Remove		
1549	<i>Quercus rubra</i>	Red Oak	26	3 - Fair	Preserve	Lean, Crown Lean	
1550	<i>Quercus alba</i>	White Oak	22	2 - Good	Preserve	Slight imbalance	
1551	<i>Quercus alba</i>	White Oak	18	2 - Good	Preserve	Lean	20% dead wood
1552	<i>Quercus alba</i>	White Oak	30	2 - Good	Remove	Unbalanced	
1553	<i>Acer saccharum</i>	Sugar Maple	20	2 - Good	Remove	Unbalanced	10% dead wood
1554	<i>Quercus alba</i>	White Oak	25	2 - Good	Remove	Unbalanced	
1555	<i>Quercus alba</i>	White Oak	18	2 - Good	Remove	Unbalanced	
1556	<i>Quercus alba</i>	White Oak	20	2 - Good	Remove	Unbalanced	
1557	<i>Quercus alba</i>	White Oak	17	3 - Fair	Remove	Strong lean	
1558	<i>Quercus alba</i>	White Oak	19	2 - Good	Remove	Unbalanced	
1559	<i>Tilia americana</i>	American Basswood	16	3 - Fair	Remove	Unbalanced, Crown Lean	
1560	<i>Carya ovata</i>	Shagbark Hickory	9	2 - Good	Remove		
1561	<i>Quercus rubra</i>	Red Oak	15	2 - Good	Remove	Crown Lean	
1562	<i>Quercus rubra</i>	Red Oak	27	3 - Fair	Remove	Lean	20% dead wood
1563	<i>Quercus rubra</i>	Red Oak	23	3 - Fair	Remove	Lean	20% dead wood
1564	<i>Quercus rubra</i>	Red Oak	38	4 - Fair/Poor	Remove	Lean, Crown Lean	40% dead wood
1565	<i>Quercus rubra</i>	Red Oak	36	3 - Fair	Remove	Lean	20% dead wood, Cavity
1566	<i>Picea abies</i>	Norway Spruce	11, 40	tal 4 - Fair/Poor	Remove		>50% dead wood
1567	<i>Picea abies</i>	Norway Spruce	12, 50	tal 4 - Fair/Poor	Remove		30% dead wood
1568	<i>Picea abies</i>	Norway Spruce	16, 60	tal 3 - Fair	Remove		20% dead wood
1569	<i>Quercus alba</i>	White Oak	26	2 - Good	Remove		20% dead wood
1570	<i>Acer saccharum</i>	Silver Maple	28	3 - Fair	Remove		30% dead wood

TAG NO.	SCIENTIFIC NAME	COMMON NAME	DBH (inches)	CONDITION	ACTION	STRUCTURE	HEALTH
1571	<i>Acer saccharum</i>	Sugar Maple	15	2 - Good	Remove	Unbalanced	
1572	<i>Quercus rubra</i>	Red Oak	22	4 - Fair/Poor	Remove		30% dead wood
1573	<i>Quercus rubra</i>	Red Oak	28	3 - Fair	Preserve	Lean	20% dead wood, Cavity
1574	<i>Acer platanoides</i>	Norway Maple	12	2 - Good	Remove	Lean	
1575	<i>Quercus alba</i>	White Oak	17	2 - Good	Remove		
1576	<i>Acer platanoides</i>	Norway Maple	11	2 - Good	Remove		
1577	<i>Quercus alba</i>	White Oak	25	2 - Good	Remove	Unbalanced	
1578	<i>Acer saccharum</i>	Silver Maple	20	3 - Fair	Remove		20% dead wood
1579	<i>Quercus rubra</i>	Red Oak	28	2 - Good	Remove	Lean	
1580	<i>Tilia americana</i>	American Basswood	22	2 - Good	Remove		20% dead wood
1581	<i>Acer saccharum</i>	Silver Maple	18	3 - Fair	Remove		20% dead wood
1582	<i>Quercus alba</i>	White Oak	32	3 - Fair	Remove	Lean	Healed trunk scar
1583	<i>Tilia americana</i>	American Basswood	20	2 - Good	Preserve	Unbalanced	
1584	<i>Quercus alba</i>	White Oak	32	2 - Good	Preserve	Unbalanced	
1585	<i>Quercus alba</i>	White Oak	30	2 - Good	Preserve	Crown Lean	
1586	<i>Quercus alba</i>	White Oak	28	2 - Good	Preserve	Unbalanced	10% dead wood
1587	<i>Quercus alba</i>	White Oak	34	2 - Good	Remove		10% dead wood
1588	<i>Quercus alba</i>	White Oak	30	2 - Good	Remove	Unbalanced	
1589	<i>Acer saccharum</i>	Sugar Maple	16	2 - Good	Remove		
1590	<i>Quercus rubra</i>	Red Oak	26	2 - Good	Remove	Crown Lean	10% dead wood
1591	<i>Quercus alba</i>	White Oak	25	3 - Fair	Remove	Crown Lean	Cavity
1592	<i>Quercus rubra</i>	Red Oak	28	2 - Good	Remove		20% dead wood
1593	<i>Ostrya virginiana</i>	Ironwood	7	3 - Fair	Remove	Slight lean	
1594	<i>Tilia americana</i>	American Basswood	11, 3, 3	3 - Fair	Remove	Crown Lean	20% dead wood
1595	<i>Tilia americana</i>	American Basswood	12, 6, 3	3 - Fair	Remove	Lean, Unbalanced, Crowded	
1596	<i>Acer saccharum</i>	Silver Maple	14	3 - Fair	Remove	U-shaped joint, Lean, at 6'	
1597	<i>Acer saccharum</i>	Sugar Maple	14	2 - Good	Remove	Unbalanced	
1598	<i>Tilia americana</i>	American Basswood	17, 4, 3	3 - Fair	Remove	Lean	20% dead wood
1599	<i>Tilia americana</i>	American Basswood	16	2 - Good	Remove	Crown Lean	
1600	<i>Acer saccharum</i>	Silver Maple	17	3 - Fair	Remove	Unbalanced, Crown Lean	20% dead wood
1601	<i>Quercus rubra</i>	Red Oak	26	4 - Fair/Poor	Remove	U-shaped joint, Crown Lean	20% dead wood, Cavity
1602	<i>Quercus alba</i>	White Oak	23	2 - Good	Remove		
1603	<i>Quercus alba</i>	White Oak	20	2 - Good	Remove		
1604	<i>Quercus alba</i>	White Oak	22	2 - Good	Remove	Crown Lean	
1605	<i>Acer saccharum</i>	Sugar Maple	12	3 - Fair	Remove	Unbalanced	
1606	<i>Acer saccharum</i>	Silver Maple	18	3 - Fair	Remove	Crown Lean	30% dead wood
1607	<i>Quercus alba</i>	White Oak	24	2 - Good	Remove		20% dead wood
1608	<i>Ostrya virginiana</i>	Ironwood	26	2 - Good	Remove		10% dead wood
1609	<i>Ostrya virginiana</i>	Ironwood	7	3 - Fair	Remove	Lean	20% dead wood
1610	<i>Quercus alba</i>	White Oak	18	2 - Good	Remove	Unbalanced	20% dead wood, Healed trunk scar
1611	<i>Quercus alba</i>	White Oak	29	3 - Fair	Remove	Lean	
1612	<i>Tilia americana</i>	American Basswood	13	3 - Fair	Remove	Lean, Crown Lean	
1613	<i>Tilia americana</i>	American Basswood	13	3 - Fair	Remove	Lean	20% dead wood
1614	<i>Quercus rubra</i>	Red Oak	23	4 - Fair/Poor	Remove	Lean	30% dead wood, Cavity
1615	<i>Acer platanoides</i>	Norway Maple	16	2 - Good	Remove	Unbalanced	
1616	<i>Quercus alba</i>	White Oak	20	3 - Fair	Preserve	Lean, Crown Lean	20% dead wood
1617	<i>Quercus alba</i>	White Oak	22	2 - Good	Remove	Unbalanced	20% dead wood
1618	<i>Acer saccharum</i>	Silver Maple	28	3 - Fair	Remove	Lean	20% dead wood
1619	<i>Acer platanoides</i>	Norway Maple	8	2 - Good	Remove		20% dead wood
1620	<i>Tilia americana</i>	American Basswood	22	2 - Good	Remove	Unbalanced, Crown Lean	20% dead wood
1621	<i>Quercus alba</i>	White Oak	21	2 - Good	Remove	Unbalanced	10% dead wood
1622	<i>Quercus alba</i>	White Oak	29	2 - Good	Remove	Unbalanced, Crown Lean	
1623	<i>Quercus rubra</i>	Red Oak	24	3 - Fair	Remove	Unbalanced, Crown Lean	20% dead wood
1624	<i>Acer saccharum</i>	Silver Maple	16	2 - Good	Remove		20% dead wood
1625	<i>Quercus alba</i>	White Oak	13	2 - Good	Remove		20% dead wood
1626	<i>Quercus alba</i>	White Oak	23	4 - Fair/Poor	Remove		20% dead wood, Cavity, at base
1627	<i>Quercus alba</i>	White Oak	22	2 - Good	Preserve	Lean	
1628	<i>Acer platanoides</i>	Norway Maple	12	2 - Good	Remove	Unbalanced	
1629	<i>Acer saccharum</i>	Silver Maple	30	3 - Fair	Remove	Unbalanced	20% dead wood
1630	<i>Quercus rubra</i>	Red Oak	28	4 - Fair/Poor	Remove		20% dead wood, Hollow, Trunk Damage, Peeling Bark
1631	<i>Quercus alba</i>	White Oak	15	2 - Good	Preserve		20% dead wood
1632	<i>Quercus alba</i>	White Oak	20	2 - Good	Remove	Lean	10% dead wood
1633	<i>Quercus alba</i>	White Oak	20	2 - Good	Remove	Lean, Unbalanced	
1634	<i>Tilia americana</i>	American Basswood	26	3 - Fair	Remove	Lean, Crown Lean	
1635	<i>Tilia americana</i>	American Basswood	25	3 - Fair	Remove	Lean	10% dead wood
1636	<i>Quercus rubra</i>	Red Oak	24	3 - Fair	Remove	Lean	10% dead wood
1637	<i>Quercus rubra</i>	Red Oak	21	3 - Fair	Preserve	Lean, Unbalanced	20% dead wood
1638	<i>Tilia americana</i>	American Basswood	15	3 - Fair	Preserve	Lean	20% dead wood
1639	<i>Tilia americana</i>	American Basswood	16	2 - Good	Preserve	Slight lean	
1640	<i>Tilia americana</i>	American Basswood	9	2 - Good	Remove		
1641	<i>Juglans nigra</i>	Black Walnut	22	3 - Fair	Remove	Crown Lean	20% dead wood
1642	<i>Carya ovata</i>	Shagbark Hickory	10	2 - Good	Remove	Unbalanced	Vines
1643	<i>Tilia americana</i>	American Basswood	9	3 - Fair	Remove	Lean, Crown Lean	
1644	<i>Tilia americana</i>	American Basswood	13	3 - Fair	Remove	Lean, Crown Lean	20% dead wood
1645	<i>Populus deltoides</i>	Eastern Cottonwood	40	2 - Good	Preserve		20% dead wood
1646	<i>Tilia americana</i>	American					

TREE INVENTORY LIST

RATING AND SURVEY CRITERIA

- 1) Trees measured at 4.5 ft above the ground - DBH (diameter Breast Height)
- 2) All trees 12" DBH and above tagged. Dead trees were tagged for removal. Invasive shrubs were not tagged.
- 3) Health Rating:

Rating	Description	Criteria
1	Excellent	Less than 10% dead wood, typical growth for species, no observed defects
2	Good	Less than 20% dead wood, minor defects, sound structure, no decay
3	Fair	Less than 30% dead wood, minor crown die-back, minor trunk damage or cavities
4	Fair to Poor	Approximately 30-50% dead wood, lacking full crown, minor disease evidence, trunk damage
5	Poor	Over 50% dead wood, lacking full crown, disease or decay evident, structural damage/cavities
6	Dead	Less than 10% living wood, greater than 50% missing bark, adventitious growth only, decay

TAG NO.	SCIENTIFIC NAME	COMMON NAME	DBH (inches)	CONDITION	ACTION	STRUCTURE	HEALTH	
4788	<i>Carya ovata</i>	Shagbark Hickory	24	3 - Fair	Remove	V-shaped joint	Large scar from branch falling	
4789	<i>Juglans nigra</i>	Black Walnut	9	2 - Good	Remove		Poison ivy vines around lower trunk	
4790	<i>Carya ovata</i>	Shagbark Hickory	18	2 - Good	Remove			
4791	<i>Carya ovata</i>	Shagbark Hickory	19	3 - Fair	Remove	Lean, Crown Lean		
4792	<i>Tsuga canadensis</i>	Eastern Hemlock	8, 35'	3 - Fair	Remove		20% dead wood	
4793	<i>Carya ovata</i>	Shagbark Hickory	15	2 - Good	Remove	Crown Lean, Crowded		
4794	<i>Quercus alba</i>	White Oak	30	4 - Fair/Poor	Remove		30% dead wood, Hollow, Cavity	
4795	<i>Quercus alba</i>	White Oak	32	2 - Good	Remove		10% dead wood	
4796	<i>Prunus serotina</i>	Black Cherry	10	3 - Fair	Remove	Lean, Unbalanced	10% dead wood	
4797	<i>Quercus alba</i>	White Oak	32	2 - Good	Remove	V-shaped joint, Slight lean	10% dead wood	
4798	<i>Quercus alba</i>	White Oak	34	2 - Good	Remove	Unbalanced	10% dead wood	
4799	<i>Ulmus americana</i>	American Elm	14	3 - Fair	Remove	Crown Lean	20% dead wood	
4800	<i>Tilia americana</i>	American Basswood	11	2 - Good	Remove	Slight lean		
4801	<i>Quercus alba</i>	White Oak	32	2 - Good	Remove	Slight imbalance		
4802	<i>Tilia americana</i>	American Basswood	17	2 - Good	Remove	Slight crown lean		
4803	<i>Tilia americana</i>	American Basswood	13	2 - Good	Remove	Slight crown lean	10% dead wood	
4804	<i>Tilia americana</i>	American Basswood	18	10	4 - Fair/Poor	Remove	Double Leader, Fused Leaders, Crowded, One leader girdling other	
4805	<i>Ulmus americana</i>	American Elm	8	3 - Fair	Remove	Crown Lean, Crowded		
4806	<i>Tilia americana</i>	American Basswood	27	3 - Fair	Remove	Lean	20% dead wood	
4807	<i>Tilia americana</i>	American Basswood	24	4 - Fair/Poor	Remove	Lean	Strong lean, Unbalanced, Crown	
4808	<i>Acer negundo</i>	Box Elder	18	3 - Fair	Remove	Lean	20% dead wood	
4809	<i>Tilia americana</i>	American Basswood	17	2 - Good	Remove	Unbalanced		
4810	<i>Tilia americana</i>	American Basswood	15	4 - Fair/Poor	Remove	Lean	Strong lean, Unbalanced, Crown	
4811	<i>Tilia americana</i>	American Basswood	22	4 - Fair/Poor	Remove	Lean, Broken Limb		
4812	<i>Tilia americana</i>	American Basswood	22	3 - Fair	Remove	Lean, Unbalanced	10% dead wood	
4813	<i>Tilia americana</i>	American Basswood	16	10	4 - Fair/Poor	Remove	U-shaped joint, Double Leader, Strong lean	
4814	<i>Tilia americana</i>	American Basswood	19	4 - Fair/Poor	Remove	Lean	Trunk Damage, Peeling Bark	
4815	<i>Tilia americana</i>	American Basswood	18	2 - Good	Remove	Lean		
4816	<i>Tilia americana</i>	American Basswood	12	9	4 - Fair/Poor	Remove	V-shaped joint, Double Leader, Split	
4817	<i>Tilia americana</i>	American Basswood	14	3 - Fair	Remove	Lean, Unbalanced	10% dead wood	
4818	<i>Acer negundo</i>	Box Elder	12	3 - Fair	Remove	Lean	20% dead wood	
4819	<i>Acer platanoides</i>	Norway Maple	10	2 - Good	Remove	Lean		
4820	<i>Carya ovata</i>	Shagbark Hickory	20	1 - Excellent	Remove			
4821	<i>Tilia americana</i>	American Basswood	14, 8, 8, 8, 6, 6	4 - Fair/Poor	Remove	V-shaped joint, Multi Leader, Split Leaders, Crowded		
4822	<i>Tilia americana</i>	American Basswood	6	4	3 - Fair	Remove	U-shaped joint, Double Leader, Lean	
4823	<i>Tilia americana</i>	American Basswood	14	10	4 - Fair/Poor	Remove	V-shaped joint, Double Leader, Split	
4824	<i>Juglans nigra</i>	Black Walnut	10	4 - Fair/Poor	Remove	Risk	50% dead wood	
4825	<i>Tilia americana</i>	American Basswood	24	3 - Fair	Remove	Lean	10% dead wood	
4826	<i>Acer platanoides</i>	Norway Spruce	34, 50'	3 - Fair	Remove	V-shaped joint, Double Leader, Fused Leaders	20% dead wood	
4827	<i>Tilia americana</i>	American Basswood	18	14	3 - Fair	Remove	Lean, Unbalanced, Crowded	
4828	<i>Quercus alba</i>	Red Oak	48	3 - Fair	Remove	Lean	20% dead wood, Tip die back	
4829	<i>Tilia americana</i>	American Basswood	10	3 - Fair	Remove	Crown Lean, Broken Limb	20% dead wood	
4830	<i>Tilia americana</i>	American Basswood	20	3 - Fair	Remove	Lean	20% dead wood	
4831	<i>Quercus rubra</i>	Red Oak	32	2 - Good	Remove	Lean	20% dead wood	
4832	<i>Tilia americana</i>	American Basswood	20	2 - Good	Remove	Lean	10% dead wood	
4833	<i>Tilia americana</i>	American Basswood	38, 19, 19	4 - Fair/Poor	Remove	V-shaped joint, Multi Leader, Split		
4834	<i>Tilia americana</i>	American Basswood	12	3 - Fair	Remove	Risk		
4835	<i>Tilia americana</i>	American Basswood	18, 6	3 - Fair	Remove	Crown Lean	10% dead wood	
4836	<i>Quercus rubra</i>	Red Oak	24	2 - Good	Remove	Lean	20% dead wood	
4837	<i>Tilia americana</i>	American Basswood	18	3 - Fair	Remove	Lean	10% dead wood	
4838	<i>Tilia americana</i>	American Basswood	16	4 - Fair/Poor	Remove	Lean, Crown Lean	30% dead wood	
4839	<i>Quercus alba</i>	White Oak	30	2 - Good	Remove	Unbalanced	20% dead wood	
4840	<i>Quercus alba</i>	White Oak	30	2 - Good	Remove	Unbalanced	20% dead wood	
4841	<i>Quercus alba</i>	White Oak	28	2 - Good	Remove	Unbalanced	20% dead wood	
4842	<i>Quercus alba</i>	White Oak	28	2 - Good	Remove	Unbalanced	20% dead wood	
4843	<i>Carya ovata</i>	Shagbark Hickory	27	2 - Good	Remove	Unbalanced	20% dead wood	
4844	<i>Tilia americana</i>	American Basswood	32	3 - Fair	Remove	Lean, Unbalanced, Crown Lean	20% dead wood	
4845	<i>Prunus serotina</i>	Black Cherry	20	3 - Fair	Remove	Lean	20% dead wood	
4846	<i>Carya ovata</i>	Shagbark Hickory	10	2 - Good	Remove	Lean		
4847	<i>Prunus serotina</i>	Black Cherry	14	3 - Fair	Remove	Lean	20% dead wood	
4848	<i>Quercus rubra</i>	Red Oak	33	2 - Good	Remove	Lean, Unbalanced		
4849	<i>Tilia americana</i>	American Basswood	14	3 - Fair	Remove	Crown Lean, Broken Limb	20% dead wood	
4850	<i>Tilia americana</i>	American Basswood	16	3 - Fair	Remove	Crown Lean	20% dead wood	
4851	<i>Tilia americana</i>	American Basswood	19	3 - Fair	Remove	Crown Lean	20% dead wood, Peeling Bark at base	
4852	<i>Tilia americana</i>	American Basswood	19	3 - Fair	Remove	Crown Lean	20% dead wood	
4853	<i>Quercus rubra</i>	Red Oak	10	2 - Good	Remove	Lean		
4854	<i>Quercus rubra</i>	Red Oak	20	3 - Fair	Remove	Strong lean	20% dead wood	
4855	<i>Tilia americana</i>	American Basswood	7	3 - Fair	Remove	Lean, Crown Lean, Crowded		
4856	<i>Tilia americana</i>	American Basswood	14	3 - Fair	Remove	Crown Lean	30% dead wood	
4857	<i>Tilia americana</i>	American Basswood	8	3 - Fair	Remove	Lean, Crown Lean	20% dead wood	
4858	<i>Tilia americana</i>	American Basswood	17	3 - Fair	Remove	Lean	Healed trunk scar	
4859	<i>Carya ovata</i>	Shagbark Hickory	22	3 - Fair	Remove	Lean, Crown Lean		
4860	<i>Carya ovata</i>	Shagbark Hickory	18	2 - Good	Remove	Lean	10% dead wood	
4861	<i>Tilia americana</i>	American Basswood	13	3 - Fair	Remove	Lean, Crowded		
4862	<i>Carya ovata</i>	Shagbark Hickory	19	2 - Good	Remove	Unbalanced		
4863	<i>Carya ovata</i>	Shagbark Hickory	10	3 - Fair	Remove	Crown Lean	Trunk Scar	
4864	<i>Carya ovata</i>	Shagbark Hickory	30	2 - Good	Remove	Lean		
4865	<i>Quercus rubra</i>	Red Oak	14	2 - Good	Remove	Unbalanced		
4866	<i>Quercus rubra</i>	Red Oak	40	2 - Good	Remove	Unbalanced	20% dead wood	
4867	<i>Carya ovata</i>	Shagbark Hickory	10	2 - Good	Remove	Unbalanced		
4868	<i>Tilia americana</i>	American Basswood	12	2 - Good	Remove	Unbalanced		
4869	<i>Quercus rubra</i>	Red Oak	28	2 - Good	Remove	Lean		
4870	<i>Carya ovata</i>	Shagbark Hickory	18	2 - Good	Preserve	Crown Lean	20% dead wood	
4871	<i>Quercus rubra</i>	Red Oak	45	2 - Good	Preserve	Lean	20% dead wood	
4872	<i>Carya ovata</i>	Shagbark Hickory	9	2 - Good	Remove	Lean		
4873	<i>Carya ovata</i>	Shagbark Hickory	14	3 - Fair	Remove	Lean	20% dead wood	
4874	<i>Tilia americana</i>	American Basswood	20	3 - Fair	Remove	Lean	10% dead wood	
4875	<i>Tilia americana</i>	American Basswood	14	3 - Fair	Remove	Lean	20% dead wood	
4876	<i>Tilia americana</i>	American Basswood	8	3 - Fair	Remove	Lean, Unbalanced		
4877	<i>Tilia americana</i>	American Basswood	22	10	3 - Fair	Remove	Unbalanced	20% dead wood
4878	<i>Tilia americana</i>	American Basswood	13	3 - Fair	Remove	Lean, Unbalanced, Broken Limb	20% dead wood	

TAG NO.	SCIENTIFIC NAME	COMMON NAME	DBH (inches)	CONDITION	ACTION	STRUCTURE	HEALTH
4879	<i>Tilia americana</i>	American Basswood	10	2 - Good	Remove		20% dead wood
4880	<i>Tilia americana</i>	American Basswood	10	2 - Good	Remove	Broken Limb	20% dead wood
4881	<i>Tilia americana</i>	American Basswood	15	3 - Fair	Remove	Lean, Unbalanced	20% dead wood
4882	<i>Tilia americana</i>	American Basswood	15	2 - Good	Remove		10% dead wood
4883	<i>Tilia americana</i>	American Basswood	8	2 - Good	Remove	Crown Lean	
4884	<i>Tilia americana</i>	American Basswood	11	2 - Good	Remove	Lean	
4885	<i>Tilia americana</i>	American Basswood	14	2 - Good	Remove		20% dead wood
4886	<i>Tilia americana</i>	American Basswood	13	3 - Fair	Remove	Corrected lean	Vines
4887	<i>Tilia americana</i>	American Basswood	12	3 - Fair	Remove	Lean, Crowded	20% dead wood
4887	<i>Ostrya virginiana</i>	Ironwood	9	3 - Fair	Preserve	Unbalanced	
4888	<i>Juglans nigra</i>	Black Walnut	16	3 - Fair	Remove	Lean, Unbalanced	20% dead wood
4889	<i>Acer platanoides</i>	Norway Maple	13	2 - Good	Remove	Unbalanced	
4890	<i>Tsuga canadensis</i>	Eastern Hemlock	9	3 - Fair	Remove	Lean, Crowded	10% dead wood
4891	<i>Aesculus hippocastanum</i>	Horse Chestnut	19	3 - Fair	Remove	Lean, Crown Lean	
4892	<i>Aesculus hippocastanum</i>	Horse Chestnut	26	4 - Fair/Poor	Remove	Lean, Crown Lean	30% dead wood, Cavity
4893	<i>Carya ovata</i>	Shagbark Hickory	21	2 - Good	Remove	Crown Lean	10% dead wood
4894	<i>Acer platanoides</i>	Norway Spruce	11, 50'	2 - Good	Remove	Crowded	10% dead wood, YBSS
4895	<i>Acer platanoides</i>	Norway Spruce	11, 50'	2 - Good	Remove	Crowded	20% dead wood
4896	<i>Carya ovata</i>	Shagbark Hickory	23	3 - Fair	Remove	Unbalanced	30% dead wood
4897	<i>Acer negundo</i>	Box Elder	9	4	3 - Fair	Remove	V-shaped joint, Double Leader, Lean
4898	<i>Tilia americana</i>	American Basswood	25, 11	3	3 - Fair	Remove	Lean
4899	<i>Quercus rubra</i>	Red Oak	42	4 - Fair/Poor	Remove	Lean, Leader split	20% dead wood
4900	<i>Acer platanoides</i>	Norway Spruce	32, 60'	2 - Good	Remove	Lean	10% dead wood
4901	<i>Pinus strobus</i>	White Pine	17, 30'	4 - Fair/Poor	Remove	Lean, Unbalanced	40% dead wood
4902	<i>Acer platanoides</i>	Norway Spruce	21, 60'	3 - Fair	Preserve	Lean	20% dead wood
4903	<i>Ostrya virginiana</i>	Ironwood	7	3 - Fair	Preserve	Strong lean	
4904	<i>Ostrya virginiana</i>	Ironwood	6	3 - Fair	Preserve	Lean, Crowded	
4905	<i>Ostrya virginiana</i>	Ironwood	8, 6	4 - Fair/Poor	Preserve		Dead Leader
4906	<i>Ulmus americana</i>	American Elm	15	4	3 - Fair	Remove	Insect damage, included bark
4907	<i>Acer platanoides</i>	Norway Maple	19	3 - Fair	Preserve	Unbalanced, Slight lean	
4908	<i>Tilia americana</i>	American Basswood	25	9	3 - Fair	Remove	Lean
4909	<i>Tilia americana</i>	American Basswood	6	2 - Good	Remove	Unbalanced	Healed trunk scars
4910	<i>Ulmus americana</i>	American Elm	13	3 - Fair	Remove	Unbalanced	20% dead wood
4911	<i>Ostrya virginiana</i>	Ironwood	8	2 - Good	Preserve	Lean	10% dead wood
4912	<i>Tilia americana</i>	American Basswood	38	3 - Fair	Remove	Lean	10% dead wood
4913	<i>Acer negundo</i>	Box Elder	7	3 - Fair	Remove	Slight lean	10% dead wood
4914	<i>Tilia americana</i>	American Basswood	8	3 - Fair	Remove	Unbalanced	
4915	<i>Ostrya virginiana</i>	Ironwood	16	2 - Good	Remove	Unbalanced	
4916	<i>Tilia americana</i>	American Basswood	13	3 - Fair	Preserve	3" trunk scar (prune)	
4917	<i>Ulmus americana</i>	American Elm	7	3 - Fair	Preserve	Crown Lean	
4918	<i>Tilia americana</i>	American Basswood	16	2 - Good	Preserve	Crowded	
4919	<i>Tilia americana</i>	American Basswood	10, 7, 6, 2	3 - Fair	Preserve	Crowded, Prune smaller leaders	
4920	<i>Tilia americana</i>	American Basswood	17, 7, 5	3 - Fair	Preserve	Lean, Crowded	Trunk scar in 7"
4921	<i>Tilia americana</i>	American Basswood	18	10	3 - Fair	Preserve	U-shaped joint, Crowded
4922	<i>Acer negundo</i>	Box Elder	8	3 - Fair	Preserve	Lean	20% dead wood
4923	<i>Tilia americana</i>	American Basswood	8	2 - Good	Preserve	Crowded	10% dead wood
4924	<i>Tilia americana</i>	American Basswood	15	5	3 - Fair	Preserve	Lean, Crowded
4925	<i>Catalpa speciosa</i>	Catalpa	10	3 - Fair	Preserve	Lean	
4926	<i>Tilia americana</i>	American Basswood	10, 8	3 - Fair	Preserve	V-shaped joint, Lean	Included bark
4927	<i>Juglans nigra</i>	Black Walnut	16	3 - Fair	Preserve	Crowded	
4928	<i>Tilia americana</i>	American Basswood					