

TRANSPORTATION DEPARTMENT MONTHLY REPORT

JULY 2024



VILLAGE OF SCHAUMBURG

PROGRESS THROUGH THOUGHTFUL PLANNING

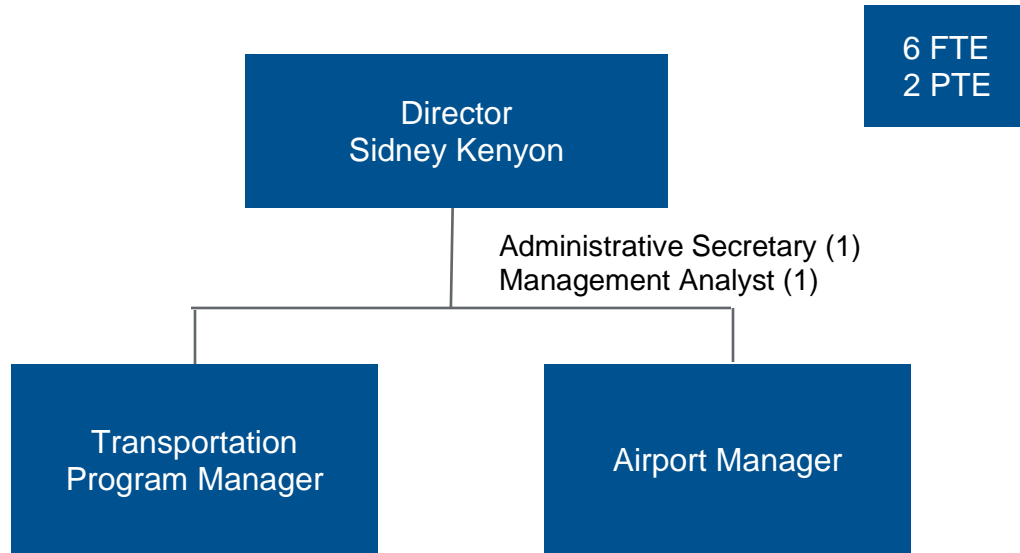


Contents

Organization Chart	1
Department Overview	2
Key Activities	2
Access Improvement Projects	2
Martingale Road / Higgins Road Bike Path Preliminary Engineering	2
Central Road Extension Feasibility Study	2
Braintree Drive Improvement Project.....	3
Spring South Road Preliminary Engineering	3
Signal Initiatives.....	3
Meacham Road and Bank Drive Traffic Signal.....	3
Transit Initiatives.....	4
Trolley	4
Dial-a-Ride Transportation (DART)	4
Bicycle/Pedestrian Program	4
Adopt-a-Bike Path.....	4
Schaumburg Regional Airport	5
Runway End Identifier Lights Upgrade	5
Monthly Activity Summary	5



ORGANIZATION CHART



Transportation Planner (1)
PT Transportation and Bicycle Safety Interns (2) - Seasonal



DEPARTMENT OVERVIEW

The Transportation Department is responsible for the planning, operation, coordination, and oversight of providing residents, employees, and visitors with transportation options. Primary responsibilities include management of the Schaumburg Regional Airport, Dial-a-Ride Transportation (DART), Woodfield Trolley, coordination with Pace Suburban Bus on transit services, oversight of all traffic signal operations, Schaumburg Commuter Parking Lot and Rail Station, coordination of the village's Comprehensive Bikeways Plan and coordination of several disabled and senior citizen transportation services. Transportation staff is also responsible for the oversight and coordination on large regional transportation projects such as the IL-390 and I-90 Jane Addams access improvements.

The Transportation Department also plays a key role in transportation planning throughout the region and represents the village on several regional transportation and planning committees. Staff represents the village on the Northwest Municipal Conference's Bicycle and Pedestrian Committee, O'Hare Noise Compatibility Commission, DuPage Mayors and Managers Transportation Policy Committee, and the Tollway's IL-390 Local Advisory Committee.

KEY ACTIVITIES

Access Improvement Projects

Martingale Road / Higgins Road Bike Path Preliminary Engineering

The project will introduce a new bicycle facility along Higgins Road (IL 72), from National Parkway to Martingale Road, Martingale Road, between Higgins Road and Schaumburg Road, Schaumburg Road, between Martingale Road and Whitman Drive, and Corporate Crossing, between Martingale Road and Spring Creek Circle. The project will include installation for approximately 2.3 miles of new bike path to connect the residents and visitors to key retail, job, and transportation centers in the village. In July, staff continued advancing the geometric design plans for the bike paths along Higgins Road, Schaumburg Road, Martingale Road, and Corporate Crossing. This project has been awarded funding from the Congestion Mitigation and Air Quality (CMAQ) program and Illinois Transportation Enhancement Program (ITEP) for the final engineering and construction phases of this project.

Central Road Extension Feasibility Study

The extension of Central Road between the 90N District West and Roselle Road is an improvement that was identified in the traffic study for the 90N District. Currently underway, the feasibility study consists of identifying a feasible roadway alignment, identifying any challenges associated with the proposed alignment, and providing an estimated construction cost. Staff continues to coordinate with the Metropolitan Water Reclamation District (MWRD) on a proposed alignment and need for a required dam evaluation.



Braintree Drive Improvement Project

The project scope will include reconstruction of Braintree Drive from Wise Road to Weathersfield Way along with bicycle and pedestrian improvements. The project will identify how best to resolve the conflict between on-street parking and bicycle lanes along with traffic calming elements to reinforce the existing speed limit. Mitigation measures have been investigated for the geometry at the intersection with Cambridge Drive along with a roundabout feasibility study being completed for the intersection with Weathersfield Way. In July, staff continued to process feedback from the public engagement for the proposed compact roundabout design at Weathersfield Way. Responses from project stakeholders will be presented at a future Transportation Committee meeting to request direction on how to proceed. This project has been awarded funding from the Illinois Transportation Enhancement Program (ITEP) for the final engineering phase of this project. The project is also eligible for federal Surface Transportation Program Local (STP-L) funding, and staff has secured funding for the construction phase of the project.

Spring South Road Preliminary Engineering

In coordination with the Schaumburg Township Road District, this project will evaluate the reconstruction of Spring South Road between Irving Park Road (IL 19) and Wise Road. The project scope will also include bicycle and pedestrian improvements. In July, staff continued design for development of the geometric plans and coordination for public engagement to occur this upcoming fall. The intergovernmental agreement with the Township was secured for joint funding of the preliminary engineering phase. The project is eligible for federal Surface Transportation Program Local (STP-L) funding, and staff is working to secure funding in the 2024 Call for Projects under the contingency program.

Signal Initiatives

Meacham Road and Bank Drive Traffic Signal

This project scope involves design of a new traffic signal at the intersection of Bank Drive and Meacham Road to improve vehicular and pedestrian access. In July, internal review of the final plan set continued for final design approval. Staff will continue to coordinate future construction of the new traffic signal.



Transit Initiatives

Trolley

As of Memorial Day weekend, the Woodfield Trolley is currently operating daily. On weekdays, service runs from 12:00pm – 9:00pm, every 30 minutes, Saturday 10:00am – 9:00pm, every 20 minutes; and Sunday 11:00am – 6:00pm, every 30 minutes. The total ridership for the month of July was 3,306, which was a significant increase from June's ridership of 2,628.

Dial-a-Ride Transportation (DART)

DART continues to operate Monday through Friday 6am to 9pm. Total ridership for the month of July, seeing an increase from June's ridership of 2,622.

Bicycle/Pedestrian Program

Adopt-a-Bike Path

The following group(s) conducted bike path clean-ups within the month of July:

- Engineering Enterprises, Inc.
 - Wise Rd from Salem Dr to Roselle Rd
- Civiltech Engineering, Inc.
 - National Pkwy from American Ln to Higgins Rd
- Bob Schmidt
 - Salem Dr from Westfield Ln to Wise Rd
- Friends of Jewlz
 - Springinsguth Rd from Irving Park Rd (IL-19) to the Schaumburg Metra Commuter Station

Bike paths can be adopted by individuals, organizations, and businesses with the expectation that bike path clean up events occur a minimum of three times per year. This is an excellent volunteer opportunity. The village supplies safety vests, gloves, grabbers, and garbage bags at no cost. Thank you to all our volunteers!



Schaumburg Regional Airport

Runway End Identifier Lights Upgrade

The new Runway End Identifier Lights (REILs) were delivered to the Airport in late July. The lead time for delivery after purchase was 10 weeks. The Engineering and Public Works electrical division will be installing the lights. The upgraded LED lights will be brighter and will be more energy efficient than the previous incandescent units. Both Runway 11 and 29 REILs have been replaced.

Monthly Activity Summary

Monthly Rent	May	June	July
Hangar	\$26,056.35	\$28,421.35	\$28,471.35
Tie Down	\$1,021.00	\$1,510.00	\$1,000.00
Terminal Building Rent	\$13,418.79	\$13,418.79	\$13,418.79
Activity Summary			
Self Service Fuel	0	0	0
Purchased Fuel From the FBO	54	30	30
Ate at Pilot Pete's	60	63	56
Just Visiting	48	24	49
Stayed Overnight	23	16	28
Rented a Car	10	4	8
Businesses	0	0	0
Deliveries	10	9	9
Maintenance	1	0	1
Charter	0	3	1
Pattern Work	2	3	3
Special Events	50	450	100
Total Visitors	177	565	212